

Spiritual Worlds

Introduction

This collection includes artworks expressing Christian beliefs from France, Italy, Germany, and Flanders, as well as Muslim artworks from Pakistan, India, Persia, and the Ottoman Empire.

Many of the works have patterns. Look for regular and irregular repetition of shapes.

Diptych with scenes from the life of Christ



Madonna and Child



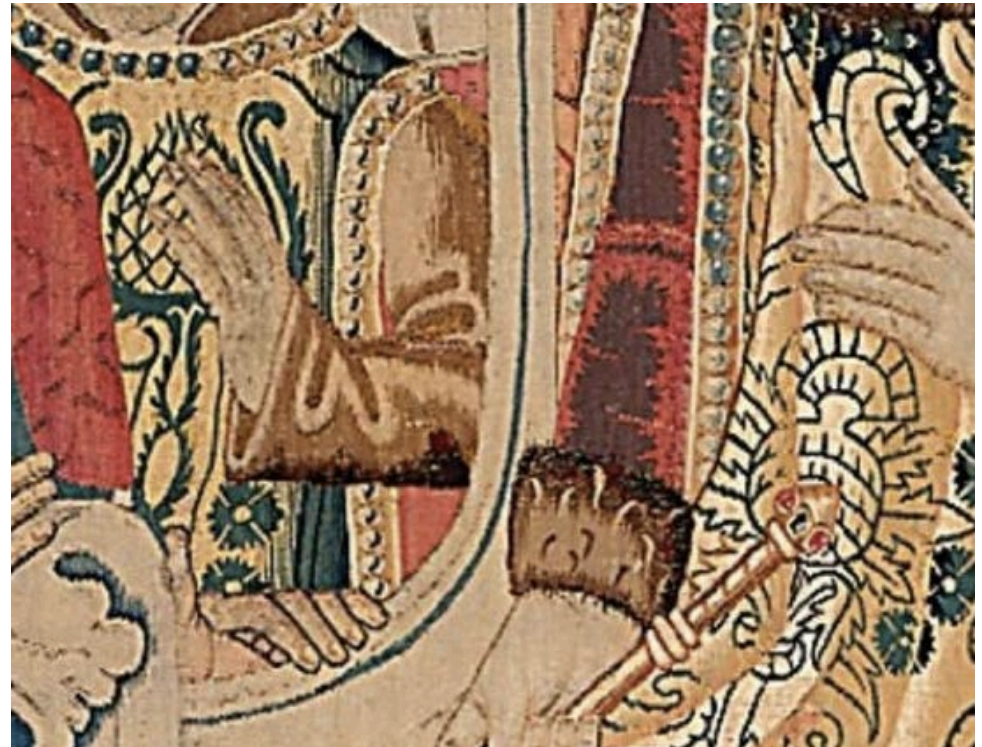
Crucifixion scene from Dominican Missal



Sanctuary Curtain



Esther and Ahasuerus



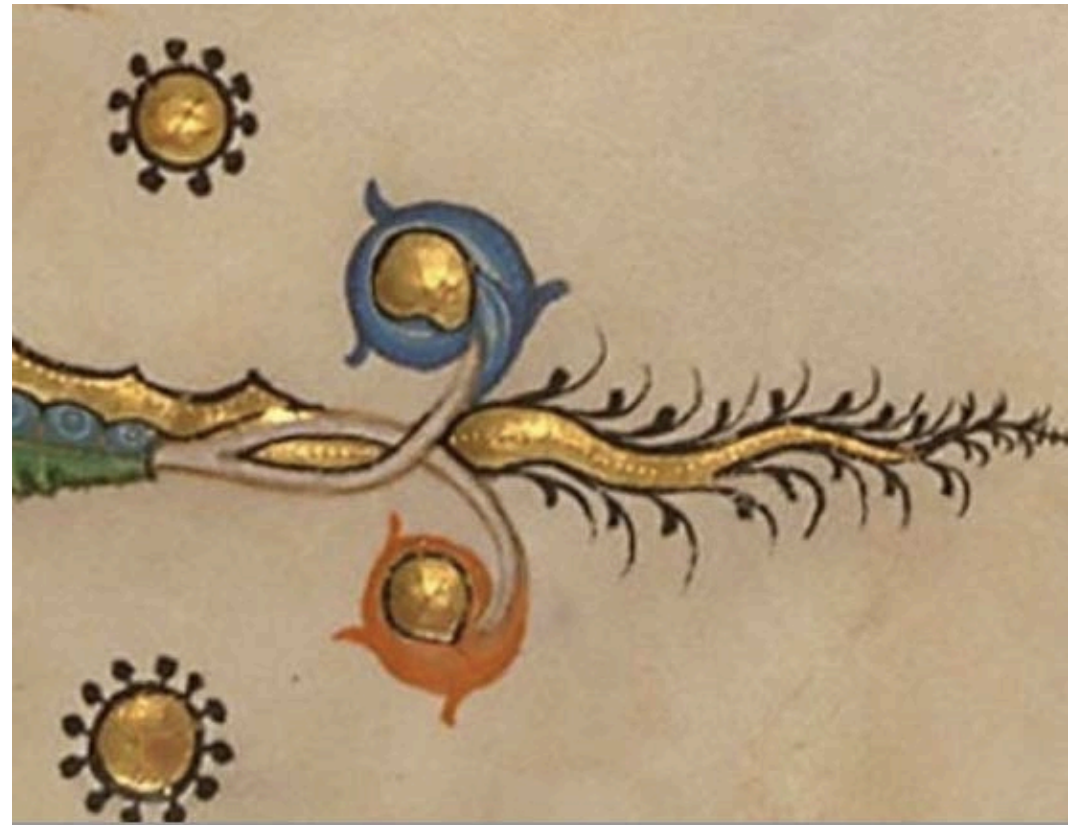
Coronation of the Virgin



Monstrance (ostensoir)



Leaf from an Antiphony: Salvator Mundi (recto and verso)



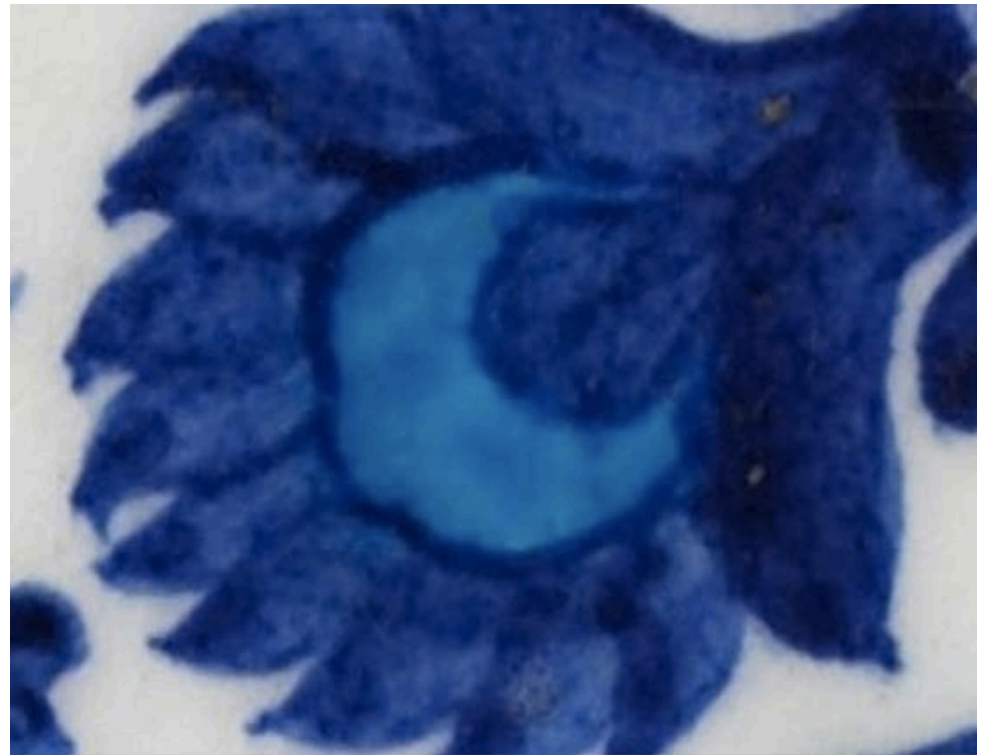
Rectangular Tile

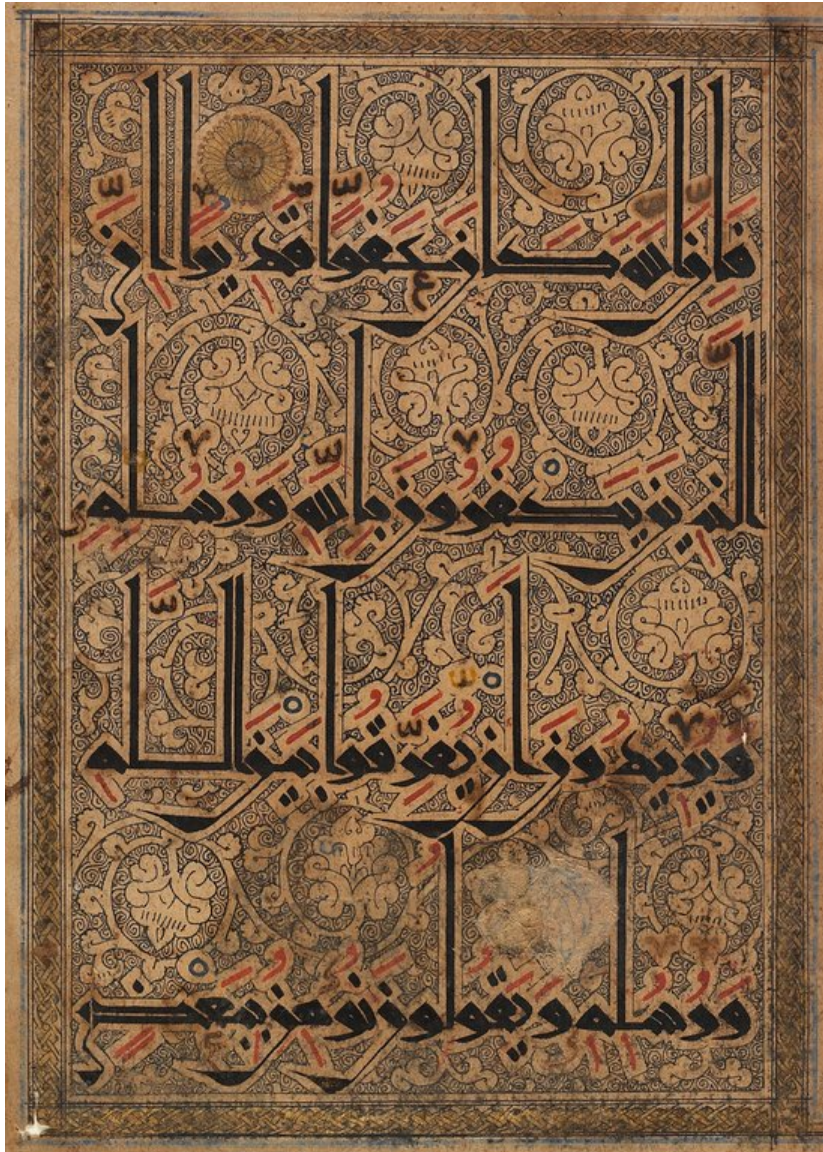


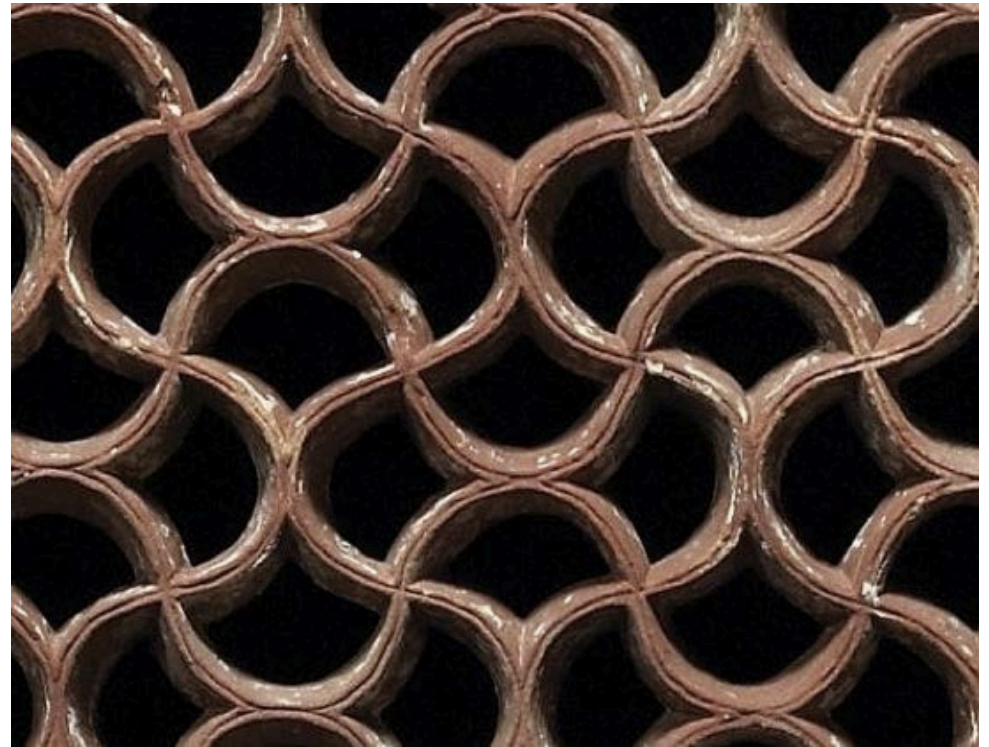
Page from the Manafi al-Hayavan



Hexagonal Wall Tile







Dish



Wedding tunic

